

WDR5 Antibody (monoclonal) (M01)**Mouse monoclonal antibody raised against a partial recombinant WDR5.****Catalog # AT4533a****Specification**

WDR5 Antibody (monoclonal) (M01) - Product Information

Application	WB, IF, E
Primary Accession	P61964
Other Accession	NM_017588
Reactivity	Human
Host	Mouse
Clonality	Monoclonal
Isotype	IgG2b Kappa
Calculated MW	36588

WDR5 Antibody (monoclonal) (M01) - Additional Information**Gene ID** 11091**Other Names**

WD repeat-containing protein 5, BMP2-induced 3-kb gene protein, WDR5, BIG3

Target/Specificity

WDR5 (NP_060058, 16 a.a. ~ 120 a.a) partial recombinant protein with GST tag. MW of the GST tag alone is 26 KDa.

Dilution

WB~~1:500~1000

IF~~1:50~200

E~~N/A

Format

Clear, colorless solution in phosphate buffered saline, pH 7.2 .

Storage

Store at -20°C or lower. Aliquot to avoid repeated freezing and thawing.

Precautions

WDR5 Antibody (monoclonal) (M01) is for research use only and not for use in diagnostic or therapeutic procedures.

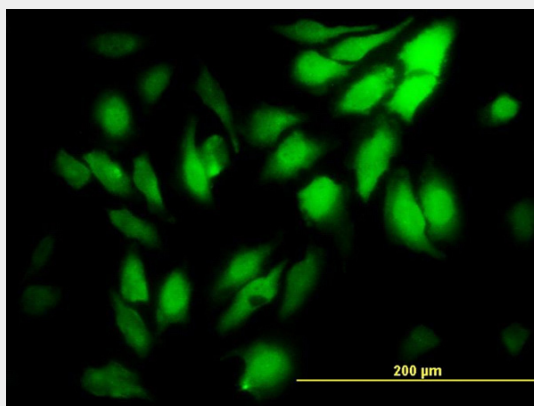
WDR5 Antibody (monoclonal) (M01) - Protocols

Provided below are standard protocols that you may find useful for product applications.

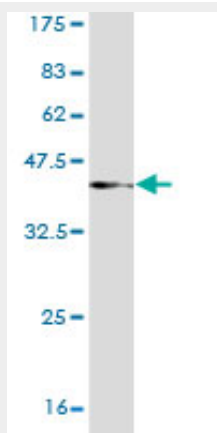
- [Western Blot](#)
- [Blocking Peptides](#)

- [Dot Blot](#)
- [Immunohistochemistry](#)
- [Immunofluorescence](#)
- [Immunoprecipitation](#)
- [Flow Cytometry](#)
- [Cell Culture](#)

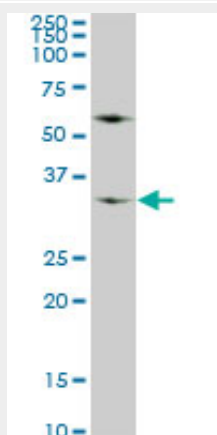
WDR5 Antibody (monoclonal) (M01) - Images



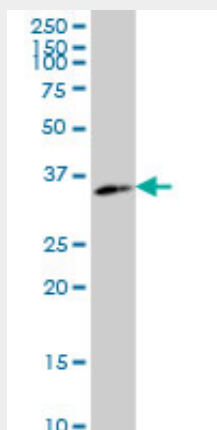
Immunofluorescence of monoclonal antibody to WDR5 on HeLa cell. [antibody concentration 10 ug/ml]



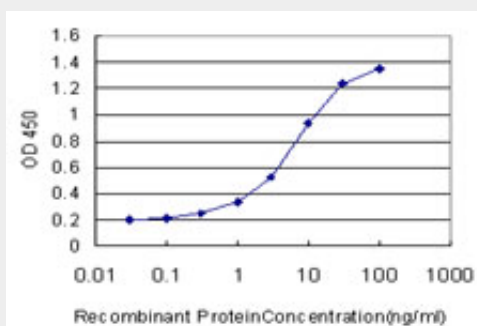
Antibody Reactive Against Recombinant Protein. Western Blot detection against Immunogen (37.29 KDa) .



WDR5 monoclonal antibody (M01), clone 2C2. Western Blot analysis of WDR5 expression in A-549 (Cat # AT4533a)



WDR5 monoclonal antibody (M01), clone 2C2. Western Blot analysis of WDR5 expression in Hs 181.Tes.



Detection limit for recombinant GST tagged WDR5 is approximately 0.3ng/ml as a capture antibody.

WDR5 Antibody (monoclonal) (M01) - Background

This gene encodes a member of the WD repeat protein family. WD repeats are minimally conserved regions of approximately 40 amino acids typically bracketed by gly-his and trp-aspartate (GH-WD), which may facilitate formation of heterotrimeric or multiprotein complexes. Members of this family are involved in a variety of cellular processes, including cell cycle progression, signal transduction, apoptosis, and gene regulation. This protein contains 7 WD repeats. Alternatively spliced transcript variants encoding the same protein have been identified.

WDR5 Antibody (monoclonal) (M01) - References

A Three-Stage Genome-Wide Association Study of General Cognitive Ability: Hunting the Small Effects. Davis OS, et al. Behav Genet, 2010 Mar 21. PMID 20306291. PHF8 activates transcription of rRNA genes through H3K4me3 binding and H3K9me1/2 demethylation. Feng W, et al. Nat Struct Mol Biol, 2010 Apr. PMID 20208542. c-Myb binds MLL through menin in human leukemia cells and is an important driver of MLL-associated leukemogenesis. Jin S, et al. J Clin Invest, 2010 Feb 1. PMID 20093773. Regulation of HOXA2 gene expression by the ATP-dependent chromatin remodeling enzyme CHD8. Yates JA, et al. FEBS Lett, 2010 Feb 19. PMID 20085832. WDR5 is essential for assembly of the VISA-associated signaling complex and virus-triggered IRF3 and NF-kappaB activation. Wang YY, et al. Proc Natl Acad Sci U S A, 2010 Jan 12. PMID 20080758.